



Cabela's  
**BIG GAME  
HUNTER**  
2005 ADVENTURES

Live the Adventure!



# AMERICAN CHOPPER



ACTIVISION

Cabela's

For a FREE Cabela's  
catalog call:  
1-800-230-8400



PlayStation 2

<http://www.replacementdocs.com>

Activision Publishing, Inc. P.O. Box 67713, Los Angeles, CA 90067  
© 2004 Activision, Inc. and its affiliates. Big Game Hunter is a trademark, and Activision is a registered trademark, of Activision, Inc. and its affiliates. All rights reserved. Cabela's and the Cabela's logo are registered trademarks of Cabela's Incorporated. American Chopper, Discover Your Brain and all related logos and indicia are trademarks of Discovery Communications, Inc. and used under license. www.discovery.com. All rights reserved. The ratings icon is a registered trademark of the Entertainment Software Association. "PlayStation" and the "PS" Family logo are registered trademarks of Sony Computer Entertainment, Inc. All other trademarks and trade names are the properties of their respective owners.

**TEEN**  
**T** Blood  
Violence  
ESRB CONTENT RATING [www.esrb.org](http://www.esrb.org)

**TEEN**  
**T**  
CONTENT RATED BY  
ESRB

ACTIVISION

**WARNING: READ BEFORE USING YOUR PLAYSTATION®2 COMPUTER ENTERTAINMENT SYSTEM.**

A very small percentage of individuals may experience epileptic seizures when exposed to certain light patterns or flashing lights. Exposure to certain patterns or backgrounds on a television screen or while playing video games, including games played on the PlayStation 2 console, may induce an epileptic seizure in these individuals. Certain conditions may induce previously undetected epileptic symptoms even in persons who have no history of prior seizures or epilepsy. If you, or anyone in your family, has an epileptic condition, consult your physician prior to playing. If you experience any of the following symptoms while playing a video game — dizziness, altered vision, eye or muscle twitches, loss of awareness, disorientation, any involuntary movement, or convulsions — IMMEDIATELY discontinue use and consult your physician before resuming play.

**WARNING TO OWNERS OF PROJECTION TELEVISIONS:**

Do not connect your PlayStation 2 console to a projection TV without first consulting the user manual for your projection TV, unless it is of the LCD type. Otherwise, it may permanently damage your TV screen.

**USE OF UNAUTHORIZED PRODUCT:**

The use of software or peripherals not authorized by Sony Computer Entertainment America may damage your console and/or invalidate your warranty. Only official or licensed peripherals should be used in the controller ports or memory card slots.

**HANDLING YOUR PLAYSTATION 2 FORMAT DISC:**

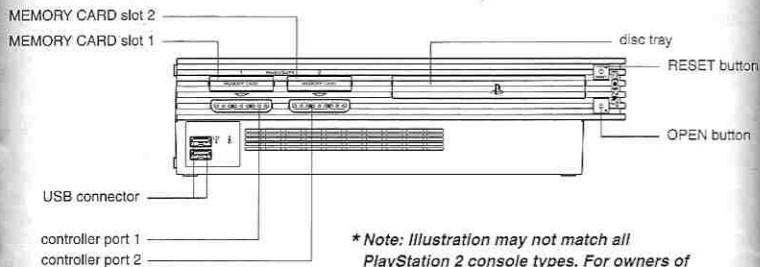
- This disc is intended for use only with PlayStation 2 consoles with the NTSC U/C designation.
- Do not bend it, crush it or submerge it in liquids.
- Do not leave it in direct sunlight or near a radiator or other source of heat.
- Be sure to take an occasional rest break during extended play.
- Keep this compact disc clean. Always hold the disc by the edges and keep it in its protective case when not in use. Clean the disc with a lint-free, soft, dry cloth, wiping in straight lines from center to outer edge. Never use solvents or abrasive cleaners.



|  |    |
|--|----|
| <b>Starting Up</b> .....                   | 3  |
| <b>Controls</b> .....                      | 3  |
| <b>Chopper Riding Tips</b> .....           | 4  |
| Transmission .....                         | 4  |
| Braking .....                              | 4  |
| High Speed Turning .....                   | 4  |
| Reverse .....                              | 4  |
| Burnout .....                              | 4  |
| Drag Racing .....                          | 4  |
| <b>Menu Navigation</b> .....               | 5  |
| Career Mode .....                          | 5  |
| Instant Mode .....                         | 5  |
| Extras .....                               | 5  |
| Options .....                              | 5  |
| Credits .....                              | 5  |
| <b>Gameplay</b> .....                      | 6  |
| Starting a New Game .....                  | 6  |
| Chapters .....                             | 6  |
| Missions .....                             | 6  |
| Custom Chopper .....                       | 7  |
| Style Points .....                         | 7  |
| Power-ups .....                            | 7  |
| <b>HUD</b> .....                           | 8  |
| <b>The Bikes Of American Chopper</b> ..... | 9  |
| <b>Customer Support</b> .....              | 11 |
| <b>Credits</b> .....                       | 12 |
| <b>Software License Agreement</b> .....    | 21 |

# AMERICAN CHOPPER

## GETTING STARTED\*



\* Note: Illustration may not match all PlayStation 2 console types. For owners of SCPH-70000 series PlayStation 2 systems, refer to the setup instructions supplied with your system.

Set up your PlayStation®2 computer entertainment system according to the instructions in its Instruction Manual. Make sure the MAIN POWER switch (located on the back of the console) is turned ON. Press the RESET button. When the power indicator lights up, press the OPEN button and the display will open. Place the American Chopper disc on the disc tray with the label side facing up. Press the OPEN button again and the disc tray will close. Attach game controllers and other peripherals, as appropriate. Follow on-screen instructions and refer to this manual for information on using the software.

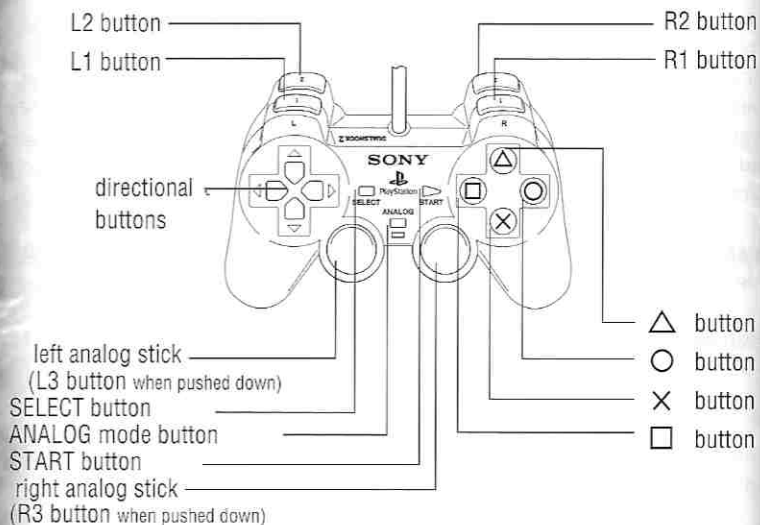
### Memory Card (8MB)(for PlayStation®2)

To save game settings and progress, insert a memory card (8MB)(for PlayStation®2) into MEMORY CARD slot 1 of your PlayStation®2 system. You can load saved game data from the same memory card or any memory card (8MB)(for PlayStation®2) containing previously saved games.

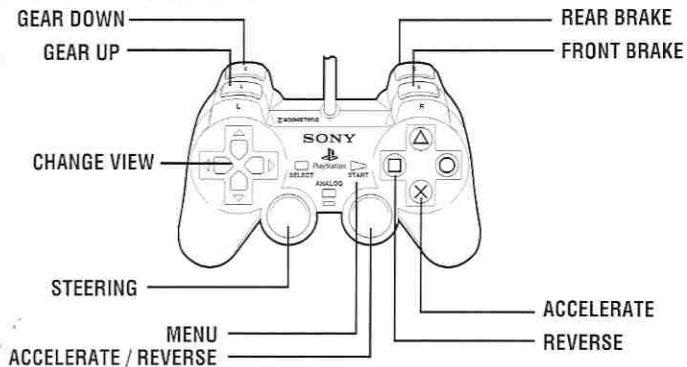
# AMERICAN CHOPPER

## STARTING UP

### DUALSHOCK®2 ANALOG CONTROLLER CONFIGURATIONS



### DEFAULT CONTROLS



\* Alternate controller configurations are available in the Options menu.



# AMERICAN CHOPPER

## AMERICAN CHOPPER

### CHOPPER RIDING TIPS

**Transmission-** Automatic or manual transmission can be chosen from the Options menu. In manual transmission, you must control what gear the bike is in. While accelerating, watch the tachometer. Just before it reaches the red zone, push the Gear Up button. Pushing the Gear Down button will lower the gear of your bike. Lower gears give you better acceleration at low speeds, and higher gears give you better acceleration at high speeds. Automatic transmission lets the game change gears for you, automatically.

**Braking-** All bikes have a front and rear brake, which can be used individually. Use both brakes at once for the quickest stops.

**High Speed Turning-** Turning too sharply at high speeds causes your bike to slide. Either slow down before you turn or try applying the front brake while you turn.

**Reverse-** You can only back up while a bike is in neutral. Push the Reverse button or down on the right analog stick to back up.

**Burnout-** To perform a controlled burnout, come to a complete stop, apply the front brake, accelerate, and steer the bike left or right.

**Drag Racing-** Drag races are always performed in manual transmission. Upon entering a Drag Race, the transmission is set to manual. After the race is over, it will be reset to its original setting from the Options menu.



# AMERICAN CHOPPER

## MENU NAVIGATION

### Main Menu

**Career Mode-** Play through a career at American Chopper. You will be running errands for Paul Sr. and Paul Jr., earning Style Points, unlocking custom choppers, and building your own custom bike.

**Instant Mode-** Replay any mission that you have already completed. Some missions will give you the option to replay a completed mission with any chopper previously unlocked.

**Extras-** The Extras menu contains several bonus features, including pictures of the theme choppers and the Teutuls.

**Statistics-** Your driving record.

**Art-** Concept art and photographs of the Teutuls and their bikes.

**Choppers-** View the themed choppers in detail.

**Options-** Change controls, vibration setting, audio levels, save, and load.

**Controls-** Choose from different control schemes.

**Audio-** Adjust the volume of music and sound effects.

**Gameplay-** Settings for controller vibration and bike transmission.

**Load/New-** Load a previously saved game, or create a new one.

**Save-** Save the current game.

**Credits-** The credits.



# AMERICAN Chopper

## GAMEPLAY

### Starting a New Game

If this is your first time playing, selecting Career Mode from the main menu will automatically bring you to the Load/New Game menu. Choose New Game, enter a name, and confirm it to proceed to the mission selection screen.

Alternatively, from the main menu, you can select the Options menu, and select Load/New Game.

### Chapters

Your career at American Chopper is divided into ten chapters. These chapters contain several missions, some of which must be completed before the next chapter can be accessed. Other missions will remain locked until enough Style Points have been accumulated.

After certain missions within a chapter have been completed, "End of Chapter" will become unlocked. Choosing "End of Chapter" will play the chapter's final cut scene, allow you to customize your own chopper, and then unlock the next chapter.

### Missions

Missions are divided into two settings. They either take place in the town of Rock Tavern or on the Open Road, riding to one of the many bike shows the Teutuls attend.

**Town-** There are many friends and adventures to be found in Rock Tavern. Get to know the streets. Paul Sr. and the people he does business with don't like to be kept waiting. Knowing your way around the residential, commercial, industrial, and park areas will be an asset.

**Open Road-** The Teutuls show their bikes at many exhibitions across the country, but getting to them can sometimes be a hassle. On the highway, you can really push your bike to the limit, but it must arrive safely and in good condition. Watch out for traffic, obstacles, and enemy bikers.



# AMERICAN Chopper

### Custom Chopper

Throughout the course of the game, you will have the ability to customize your own chopper. Make it look good! Your custom chopper will be on display with the rest of the Teutuls' bikes at bike shows across the nation.

### Style Points

Style Points are awarded for the skill you display while riding. Maintaining high speeds and performing 'Near Misses' of other vehicles will earn you Style Points. Be careful not to crash or run down pedestrians while trying to display your Style. These actions will deduct Style Points.

At the end of a successful mission, the Style Points that were accumulated during the mission are added to your Style Point total. As your Style Point total grows, parts for your own custom chopper will become unlocked. The more Style Points you earn, the more options you have available for customizing your chopper.

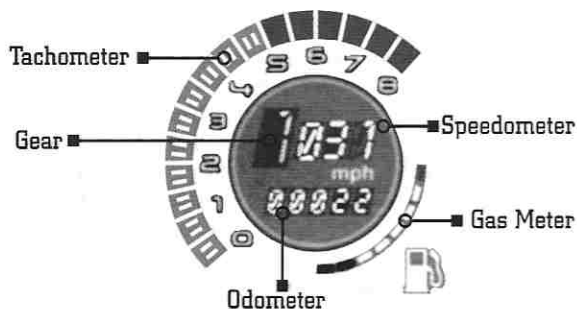
### Power-ups

As you are riding around Rock Tavern, keep an eye on your Damage Meter and Gas Meter. Should either of them run low, there are Power-ups available scattered throughout Rock Tavern and the Open Road.

**Gas Canister-** Power-ups with a gas tank refill your Gas Meter.

**Repair Kit-** Power-ups with two crossed wrenches repair damage.

## HUD



**Speedometer**- Displays your speed in miles per hour.

**Odometer**- Logs how many miles you've driven.

**Gear**- Shows what gear the transmission is in: neutral, 1, 2, 3, 4, or 5.

**Tachometer**- Displays the engine's RPMs. When in manual transmission, use this gauge to know when to shift gears.

**Gas Meter**- The amount of gas in your tank. Find a Gas Canister when this meter is running low. If you run out, the mission is over.

**Style Points**- Your Style Point total for the current mission. If you successfully complete the mission, this number will be added to your Style Point total.

**Damage Meter**- A measure of your bike's physical condition. This meter decreases whenever you crash into something. Pick up Repair Kits to keep your bike in good condition. If it runs out, the bike you are riding is totaled, and Paul Sr. will definitely notice. The current mission will come to an end.

**Map**- A map of the surrounding area.

**Big Arrow**- You

**Small Arrow**- Other bikers

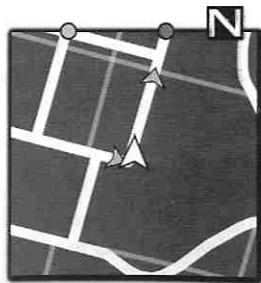
**Blue Dot**- Next waypoint

**Green Dot**- Waypoint after next

**Blinking Star**- Police officer in pursuit

**Checkered Flag**- Finish line of a race

**White Star**- American Chopper garage



## THE BIKES OF AMERICAN CHOPPER

### Old School Chopper



The Old School Chopper is a throwback to the choppers Paul Sr. first began building. It has a 40 horsepower, 80-inch pan head motor, made of mostly cast iron and steel. Other old school features include a jockey shift, suicide clutch, and kick start. The color scheme is mostly black with gold leaf accents.

Keeping with the old school theme, the front wheel has no fender and both wheels have chrome spokes that provide a nice contrast with the black rims.

### Jet Bike



The frame of the Jet Bike has a 10 inch backbone and a single down tube to give it an elongated, aerodynamic feel. The engine is a 130 horsepower V-Twin machined from aluminum. Jet themed features include: a cockpit mounted on the gas tank, 2 missiles beneath the fuel tank made from .50

caliber rounds, a number of smaller rounds mounted on each side of the down tube, a bomb shaped oil tank, a sight mounted on the handle bars, and 2 fins on the rear fender that mimic the tail of a jet. A reinforced wheelie bar not only stabilizes the bike during a wheelie, but also adds to the bike's elongated, aerodynamic look.

### Black Widow Bike



The Black Widow Bike is themed after the poisonous black widow spider. The gas tank features the black widow's signature hourglass marking, along with raised chrome webbing. The front and rear fenders are entirely composed of the same webbing. Along with the webbing, a sharp, artistically cut primary drive guard gives the bike a jagged feel. The bike has a red and black color scheme, accented by the chrome of the webbing and various other parts. The Teutuls also installed an air ride suspension system, which lowers the bike's deck height while being displayed at shows.



# AMERICAN Chopper



## Mikey's Bike



Blues music is the theme for Mikey's Bike. It has pointed rear taillights and a large shark fin on the rear fender. A stretched oil tank, oversized gas tank, and large fenders give the bike a full look. Gold spokes accent the predominantly blue color scheme. Icons of legendary blues musicians and other artists adorn the gas tank and fender.

## Tool Bike



For the Tool Bike, the Teutuls decided to use actual tools as the various parts of the bike. The bike uses a suicide shift made from an air ratchet, handlebars fashioned after a turnbuckle, two large wrenches as risers, two closed S-wrenches as struts, curved wrenches as rim supports, and a ratchet for a kickstand. Matching the theme of the wrenches, the frame and handlebars are made from hexagon shaped tube, and the exhaust tubes have hexagon shaped sleeves. A small toolbox is mounted under the seat to mimic an oil tank. The real oil tank is hidden under the transmission. The bike's color is mostly different shades of red, layered, with white pin striping, a rare color for the Teutuls.

## Comanche Bike



The dark color and angular design of the Comanche Bike give it a very stealthy look and feel. The frame is made from square piping, and the gas tank is an octagonal shape, which mimics the shape of a cockpit. Instead of sitting above the tree on risers, the handlebars are mounted under the upper tree.

This gives the bike a lower profile. The angular shape of the rear fender, along with blades in the rim of the wheel, mimics the rear rotor of a helicopter. Hydraulically operated, retractable missile flaps are located under the seat, which contain missiles made from .50 caliber rounds. A forward gun is mounted under the motor, and the exhaust pipes are drilled with holes to resemble the barrel of a machine gun.



# AMERICAN Chopper



## POW/MIA Bike



Paul Sr. built the POW/MIA Bike to honor veterans of the Vietnam War. The POW/MIA emblem is included on the trees, gas tank, seat, and rear fender. Hand crafted accent pieces made from twisted metal bar give the bike a personal touch. Barbed wire is found in the oversized spokes of the wheel, strung along the frame, and in the paint job of the tank and rear fender. The rear fender features the POW/MIA logo, which is cut out of the metal and illuminated from behind. The color scheme is black and white, with the handmade accent pieces chromed.

## CUSTOMER SUPPORT

### ONLINE SUPPORT

**Internet:** [support@activisionvalue.com](mailto:support@activisionvalue.com)  
or <http://www.activisionvalue.com>

### OTHER CONTACT METHODS

#### Fax

(952) 918-9560, 24 hours day

#### Mail

Activision Value, Customer Support  
7800 Equitable Drive, Suite 200  
Eden Prairie, MN 55344

#### Phone

(952) 918-9500. Contact a customer service representative between the hours of 1:00 p.m. and 4:00 p.m. (Central Time) Monday, 10:00 a.m. and 4:00 p.m. (Central Time) Tuesday through Thursday, except holidays.