

<http://www.replacementdocs.com>

Register Online Today!

It's as simple as 1, 2, 3!

1. Go to [www.gameregister.com](http://www.gameregister.com)
2. Enter your game's info
3. Select a great offer

Receive game-related info and other special offers by registering online today! That's it.

Atari will not contact you without your express permission.

For more information about our privacy policy, go to [http://www.us.atari.com/privacy\\_policy.asp](http://www.us.atari.com/privacy_policy.asp)

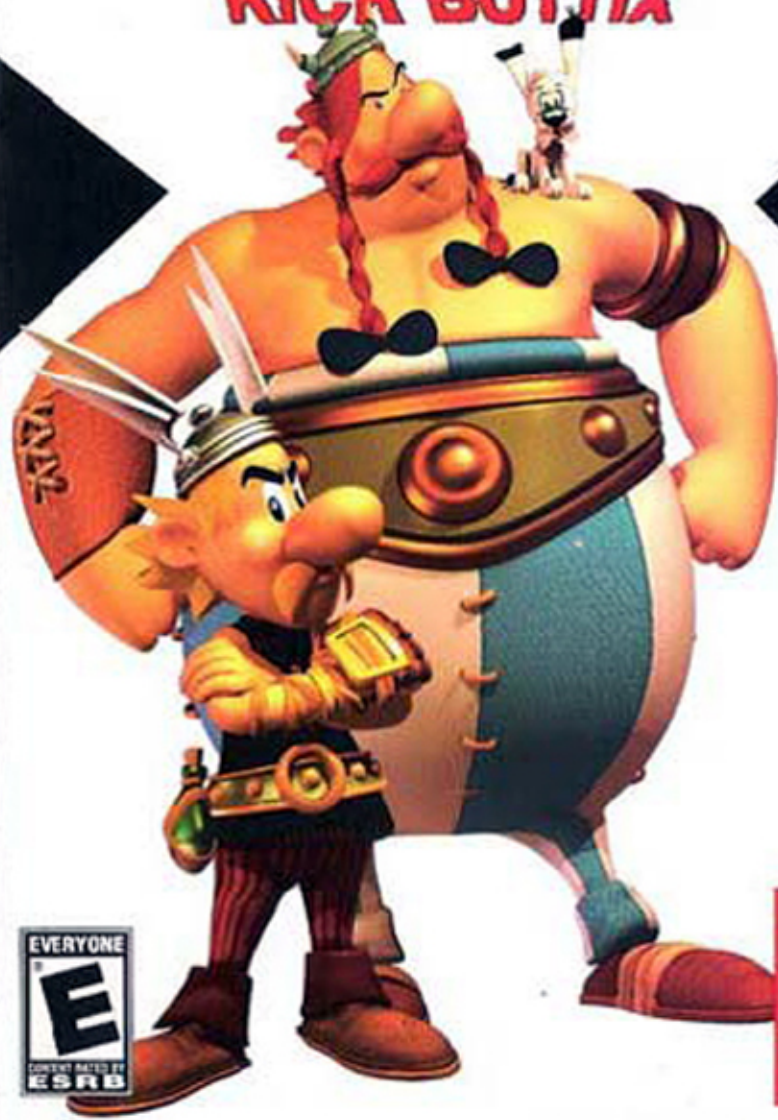
**Asterix & Obelix** ARE OFFICIAL TRADEMARKS OF LES ÉDITIONS ALBERT RENÉ  
©2004 LES ÉDITIONS ALBERT RENÉ/GOSCINNY-UDERZO

© 2003 Atari Europe. All Rights Reserved. All trademarks are the property of their respective owners.

Atari, Inc.  
417 Fifth Avenue  
New York, NY 10018 USA  
PRINTED IN THE USA.

# Asterix & Obelix

## KICK BUTTIX



Part # 25576M



ATARI

**WARNING: READ BEFORE USING YOUR PLAYSTATION®2 COMPUTER ENTERTAINMENT SYSTEM.**

A very small percentage of individuals may experience epileptic seizures when exposed to certain light patterns or flashing lights. Exposure to certain patterns or backgrounds on a television screen or while playing video games, including games played on the PlayStation 2 console, may induce an epileptic seizure in these individuals. Certain conditions may induce previously undetected epileptic symptoms even in persons who have no history of prior seizures or epilepsy. If you, or anyone in your family, has an epileptic condition, consult your physician prior to playing. If you experience any of the following symptoms while playing a video game — dizziness, altered vision, eye or muscle twitches, loss of awareness, disorientation, any involuntary movement, or convulsions — IMMEDIATELY discontinue use and consult your physician before resuming play.

**WARNING TO OWNERS OF PROJECTION TELEVISIONS:**

Do not connect your PlayStation 2 console to a projection TV without first consulting the user manual for your projection TV, unless it is of the LCD type. Otherwise, it may permanently damage your TV screen.

**USE OF UNAUTHORIZED PRODUCT:**

The use of software or peripherals not authorized by Sony Computer Entertainment America may damage your console and/or invalidate your warranty. Only official or licensed peripherals should be used in the controller ports or memory card slots.

**HANDLING YOUR PLAYSTATION 2 FORMAT DISC:**

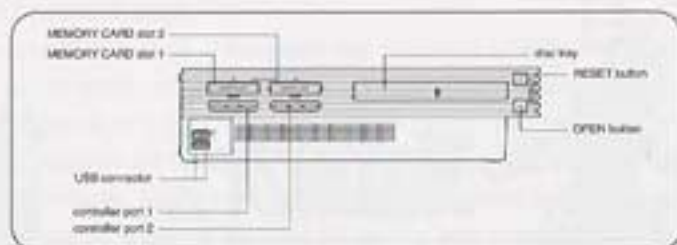
- This disc is intended for use only with PlayStation 2 consoles with the NTSC U/C designation.
- Do not bend it, crush it or submerge it in liquids.
- Do not leave it in direct sunlight or near a radiator or other source of heat.
- Be sure to take an occasional rest break during extended play.
- Keep this compact disc clean. Always hold the disc by the edges and keep it in its protective case when not in use. Clean the disc with a lint-free, soft, dry cloth, wiping in straight lines from center to outer edge. Never use solvents or abrasive cleaners.



## TABLE OF CONTENTS

Getting Started .....	2
Controls .....	3
The Village is Deserted! .....	4
Main Menu .....	4
Options .....	4
Pause Menu .....	4
Playing the Game .....	5
Saving and Loading .....	6
The Great Map .....	6
Provinces .....	6
The Peddler .....	7
Combos .....	8
Mechanisms, Items & Locks .....	9
Credits .....	10
Atari Web Sites .....	13
Technical Support .....	13
End-User License Agreement .....	15

## GETTING STARTED



Set up your PlayStation<sup>®</sup>2 computer entertainment system according to the instructions in its Instruction Manual. Make sure the MAIN POWER switch (located on the back of the console) is turned ON. Press the RESET button. When the power indicator lights up, press the OPEN button and the disc tray will open. Place the Asterix<sup>®</sup> & Obelix<sup>®</sup> disc on the disc tray with the label side facing up. Press the OPEN button again and the disc tray will close. Attach game controllers and other peripherals, as appropriate. Follow on-screen instructions and refer to this manual for information on using the software.

### Memory Card (BMB) (for PlayStation<sup>®</sup>2)

To save game settings and progress, insert a memory card (BMB) (for PlayStation<sup>®</sup>2) into MEMORY CARD slot 1 of your PlayStation<sup>®</sup>2 system. You can load saved game data from the same memory card or any memory card (BMB) (for PlayStation<sup>®</sup>2) containing previously saved games.

**Note:** Asterix & Obelix supports the DUALSHOCK<sup>®</sup>2 analog controller in controller port 1.

### For Dolby<sup>®</sup> Pro Logic<sup>®</sup> II Decoding

This game is presented in Dolby Pro Logic II. To experience the excitement of surround sound, connect your PlayStation<sup>®</sup>2 console to a sound system with Dolby Pro Logic, Dolby Pro Logic II or Dolby Pro Logic IIx decoding. You will also need to select "Dolby Pro Logic II" from the Audio section of the Options menu of the game (see "Options" on page 4 for details).



## CONTROLS

### DUALSHOCK<sup>®</sup>2 ANALOG CONTROLLER CONFIGURATIONS



CONTROL	ACTION
<b>directional buttons</b>	Change selection in menus and Great Map
<b>right analog stick</b>	Move camera
<b>left analog stick</b>	Move character
<b>L1 button (press twice)</b>	1st: Whistle to (Asterix or Obelix) to grab a Roman. 2nd: Whistle to (Asterix or Obelix) to throw a Roman.
<b>R1 button</b>	Launch Dogmatix
<b>R2 button</b>	Display Score, Life Points and Laurels collected
<b>X button (press once)</b>	Jump
<b>X button (press twice)</b>	Double jump
<b>X button (press three times)</b>	Triple Jump (if Asterix is under the effect of magic potion)
<b>triangle button</b>	Grab a Roman
<b>circle button</b>	Push enemies
<b>square button</b>	Bash a Roman (if no other specific action is displayed on screen) <b>Note:</b> At the start of the game, Asterix is capable of three bashes in a row (press the <b>square button</b> three times).
<b>square button</b>	Action button (if action — Push, Pull, Speak, Grab or Use Object — is displayed on screen) or Save
<b>START button</b>	Pause
<b>X button (during cutscene)</b>	Skip cutscene



## THE VILLAGE IS DESERTED!

It is 50 B.C., and Caesar and his elite troops have pulled off the impossible. Taking advantage of a sudden spring storm and the absence of our two heroes, the Romans invaded the indomitable Gaulish village. Upon their return to the village, Asterix and Obelix quickly learn what has happened. Everybody is now Caesar's prisoner, and the Romans have also seized a cauldron full of Magic Potion! While the cauldron is on its way to Rome, the Gaulish prisoners have been split up and scattered across the Roman Empire. Without a moment's wait, Asterix and Obelix set off in search of their friends.

## MAIN MENU

- New Game:** Start a new game.  
**Load Game:** Continue a previously saved game.  
**Options:** Adjust game options (see "Options" below).  
**Credits:** See the names of the people behind this game.

## OPTIONS

- Audio:** Stereo/Mono/Dolby Pro Logic II  
**Music Volume:** Volume adjustment  
**Sound Volume:** Volume adjustment  
**Voices Volume:** Volume adjustment  
**Vibration:** Yes/No  
**Default:** Return to default settings  
**Apply:** Save the changes

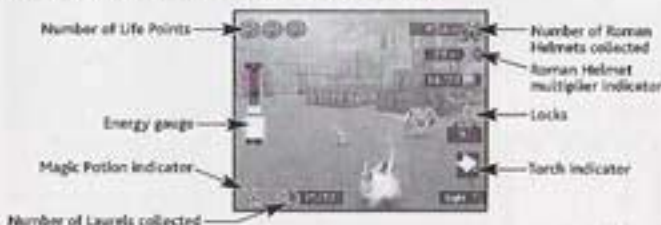
## PAUSE MENU

You can pause the game at any time by pressing the **START** button.

- Resume:** Return to the game in progress  
**Combos:** Display special moves acquired during the game (see "Combos" on page 8).  
**Options:** Adjust game options (see "Options" above).  
**Quit to Great Map:** End the current level and return to the Great Map.  
**Quit Game:** Return to the Main Menu.

## PLAYING THE GAME

This information appears depending on the context:



# Asterix & Obelix



### Two heads are better than one!

It won't be easy for our Gaulish duo. But they have one sure-fire advantage over the enemy hordes awaiting them — there are two of them! During the game, leadership shifts automatically between Asterix and Obelix, depending on the challenges you will encounter. You can also switch leadership by jumping onto certain objects that are surrounded by a blue aura. Remember, alternating our two heroes' particular skills is essential to your quest!

In combat, the follower will come closer to the leader to help out, and he will fall back a little when things are calm.



### Dogmatix

Dogmatix is always available to help you battle the Romans. Press the R1 button in battle to deploy him and to bite your enemies.

### Character progression

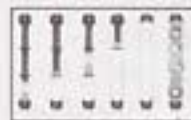
Asterix and Obelix initially have one basic attack — the Bash — but if you collect enough Roman helmets, you can buy Combo attacks from the Peddler (see "Combos" on page 8).

## The Action button

The Action button is displayed on the screen when the character you are controlling can do something special such as pull a lever, light a torch, talk to the Peddler, etc. Press the **■** button to perform the action when indicated.



## Energy gauge



Each time you bash a Roman, the energy gauge on the left side of your screen fills up. To execute combos, this gauge needs to be full, then you can continue to use combos until the gauge is empty. If you stop bashing, the energy level in the gauge will drop.

## SAVING AND LOADING



In each level, you will encounter sleeping Druids. Wake them up (press the **■** button) and they will offer you the chance to save your game. Later, if you load a saved game from the Main Menu, you will restart the game beside the Druid. When a game save location is activated, that location appears on the Great Map. The game requires 360 KB of free space on your memory card to save your progress.

To load a previously saved game, select Load Game from the Main Menu.

## THE GREAT MAP

### Province Selection

Each province you complete adds a new fragment to the Great Map. Plus, you will be able to access the province revealed by the fragment. As you explore the provinces, you can collect Gold Laurels. If you find all the Gold Laurels in the province you are exploring, you will receive a special reward.



## PROVINCES

### THE VILLAGE (GAUL)

**Complete this level to win map fragment 1**

This training level will limber up your Gaulish reflexes. Release Getafix from his Roman captors to move on to the next level.



## NORMANDY

**Complete this level to win map fragment 2**

Explore the beautiful Norman coastline and overcome hordes of Normans in order to rescue Fulliautomatix.



## GREECE

**Complete this level to win map fragment 3**

You will have to use your brain-box, and ignore a fear of heights, if you want to reach Athens' prison.



## HELVETIA

**Complete this level to win map fragment 4**

Climb and sled on the Swiss Alps in order to reach the Governor's palace.



## EGYPT

**Complete this level to win map fragment 5**

Get ready! Disable Roman military equipment and your battles here will go down in history!

## ROME

Enter Rome to grapple with bad guys and lions — and the final showcase battle!



## THE PEDDLER









Use Roman Helmets as currency to buy combos, Leg O' Boar and Shields from the Peddler. To talk to the Peddler, walk up to his stand and press the Action button.



## COMBOS

To activate a combo attack, you need to bash enough enemies to fill your energy gauge. Once it's full, press the proper button combination to launch the attack!

MOVE	CHARACTER	PICTURE	BUTTONS	DESCRIPTION
Rage Combo	Dogmatix		R1 button	Dogmatix can be launched quicker and further so that he can disarm more Romans before he returns.
Club Combo	Asterix-Obelix		X X ■ ▲ buttons	Grab an opponent and use him as a club to strike the ground (or nearby enemies). Press the X button multiple times to pound the enemy down faster. Striking the ground generates a shock wave that disarms any opponents nearby. The Roman is ejected on the sixth impact.
Power-hammer Combo	Asterix		X ▲ ■ buttons	Grab an opponent and use him as a power-hammer that causes nearby enemies to drop their weapons and retreat.
Mole Combo	Asterix		X X ● ▲ buttons, then ■ button, ■ button	Eliminate a column of Roman troops in turtle formation. After a Double Jump, Asterix spins and makes a dive before burrowing into the ground at high speed. From underground, he eliminates all enemies near the impact zone.
Twister	Asterix-Obelix		X ■ ▲ ● buttons	Asterix and Obelix are both transformed into tornadoes that suck enemies in as they gain speed.
Twister Fusion Combo	Asterix-Obelix		■ button	Press the ■ button when the tornadoes are together and linked by an electric arc. The Twister Fusion is more powerful than the Twister.

## MECHANISMS, ITEMS & LOCKS

### Mechanisms

Sometimes you will find an object that takes both heroes to operate. For example, when Asterix climbs into the basket of the cable car, control switches to Obelix, who has to move Asterix along by pulling a rope. Other mechanisms (such as the Catapult, the Rotating Beam, and others) work in a similar way.



### Items



Each **Shield** contains five Life Points. (You have three shields when the game begins.)



The **Leg O' Boar** replenishes Life Points.



To collect a **Roman Helmet** you simply have to walk over it. You obtain a number of points depending on the type of helmet collected.



The **Roman Helmet Multiplier** gives you a bonus, multiplying the number of Roman Helmets you collect for several seconds.



Only Asterix can collect gourds of **Magic Potion**, and he consumes it as soon as he collects it. If Asterix is already under the effect of Magic Potion, and he comes into contact with another gourd, an enormous shock wave is created that eliminates all Romans in proximity.

### Locks



You will sometimes encounter **Locks**. To unlock them you will need to defeat the number of Romans indicated.



## CREDITS

### ÉTRANGES LIBELLULES

Jean-Marie Nazaret  
Game Director

François Jean  
Guillaume Blanc  
Technical Directors

Jean-Christophe Blanc  
Art Director

Jean-Marie Nazaret  
Vincent Achille  
Marc Dutriez

Vincent Ravier  
David Silvy  
Game Design

Vincent Achille  
Thomas Boissier  
Michaël Bolufer  
Stéphane Camignani

Marc Dutriez  
Sylvain Passot  
Vincent Ravier  
David Silvy  
Christophe Verrouysse  
Gameplay Programming

### Programming

Engine Programming  
Guillaume Blanc  
Lead Engineer

Domenico Albani  
Alexandre Assier  
Cyril Aymard  
Cécile Bonnet  
Cédric Dodard  
Benjamin Herve  
François Jean  
Aurélien Kerbeci  
Sylvain Passot  
Yann Richard  
Engineers

### Tools Programming

François Jean  
Lead Engineer  
Domenico Albani  
Alexandre Assier  
Cyril Aymard  
Guillaume Blanc  
Cécile Bonnet  
Cédric Dodard  
Benjamin Herve  
Sylvain Passot  
Yann Richard  
Cédric Roche  
Engineers

### Game Programming

Sylvain Been  
Lead Engineer  
Domenico Albani  
Cyril Aymard  
Cécile Bonnet  
Xavier Crespo  
Cédric Dodard  
Benjamin Herve  
Sylvain Passot  
Yann Richard  
Cédric Roche  
Maxime Rollet  
Cyril Viale  
Engineers

Maxime Rollet  
Recording Engineer

### Backgrounds

Frédérique Blanc  
Lead Artist  
Jean-Christophe Blanc  
Michaël Bolufer  
Florian Canard  
David Cros  
David Di Giacomo  
Catherine Fusier  
Thomas Girard  
Fabrice Giraud  
Yannick Gombart  
Sébastien Guth  
Yoann Lori  
Jérôme Masi  
Julie Meeder  
Nathalie Michaud  
Caroline Romanet  
Sylvie Silvy  
Artists

### Characters' Modelling & Animations

Benjamin Fleury  
Lead Artist / Asterix Modelling &  
Animation / Special Effects

Emeline Mazallon  
Obelix Modelling & Animation

Florian Canard  
Laurent Dury  
Diane Le Feyer

Yoann Lori  
Julie Mercier  
Sarah Mercier  
Other Characters

Lalorest

Music & Sounds

Nicolas Chieppa

Marie Perotin

Manu Moroux

Engine Tests

Pascal Silvy

Hervé Fauchet

Carole Richard  
Administrative Team

### Special Thanks

«La Machine à Cafés»

«Nos Familles»

Achille Nazaret

Barbara

Thierry Giraud

Metroworks

Lionel LeMarie

Sony

Valentin Cade

Valéry Carpentier

Pierre-Emmanuel Chaut

Graham Dunnnett

Oskar Guilbert

François Millet

Alistair Milne

Christophe Reyes

Criterion

Mathieu Akita

Shelbrey Blanc

Jean-Christophe Cambournac

Guillaume Levensq

Nicolas Pothier

Olivier Soares

Claude Weiss

### ATARI EUROPE

Jean-Marcel Nicolai  
Senior VP, International Product Services

Rebecka Pernered

Sébastien Chaudat

Caroline Fauchille

Marie Siva

Jenny Clark

Vincent Hattenberger

Republishing Team

Lewis Glover

Olivier Robin

Vincent Laloy

Jean Yves Lagasset

Quality Control Team

RelIQ Software Pvt Ltd

Balaji "magicGamer" S.V.

Prashanth

Prabhudev

Deepa S

Roshan Anthony

Software Testing Team

Philippe Louvet

Stéphane Entastic

Emeric Polin

Engineering Services

David Chomard

Maud Favier

Diane Delays

Fabien Roset

Olivier Caudrelier

Localization Support Group

Babel Media Ltd.

Localization Testing

KBP

Translation

Roger Canel Asterix

Pierre Tomade: Obelix

Original French Voices

Synthesis International

Nicolas Chieppa

Nicolas Danière

Morgan Forlini

Matthieu Giovanoni

Emmanuel Moiroux

Onsite Testing

Sophie Wibaux

Jérôme Di Tullo

Certification and Planning Support Group

Lionel Anaud

Nadege De Bergevin

International Marketing Team



Take Off  
Packaging Agency

#### Special Thanks

Monique Escottell  
Florence Polesignon  
Florian Seidel  
Colicoba  
Stéphane Cormier  
Cécile Fouques-Duparc  
Anthony Grabit

#### ATARI

Dan DeOreo  
Stacy Allyn Hendrickson  
Producers

Deborah Mootella  
Associate Brand Manager

Jim Boone  
Executive Producer

Paul Heller  
Director of Technology

Laura Campos  
Director of Marketing

Nancy MacIntyre  
VP Marketing

Steve Martin  
Director of Creative Services

Elizabeth Mackney  
Director of Editorial &  
Documentation Services

Kristine Meier  
Art Director

Kurt Carlson  
Randi Kravitz  
Documentation Specialists

Paul Collin  
Copywriter

Michael Gilmartin  
Director of Publishing Support

Bill Carroll  
Q.A. Manager

Ken Ford  
I.T. Manager/Western Region

Michael Vetsch  
Manager of Technical Support

Ezequiel "Chuck" Nunez  
Q.A. Testing Supervisor

Michael Shamsid-Deen  
Lead Tester

Marco Mah  
Assistant Lead Tester

Adam Caldwell  
Michael Bruce

Junio Franco  
Daniyel Garcia

Henry Yel  
Testers

Luis H. Rivas  
Sr. Manager of Engineering Services  
& Compatibility

Ken Edwards  
Engineering Services Specialist

Eugene Lai  
Engineering Services Technician

Cecelia Hernandez  
Sr. Manager Strategic Relations

Joy Schmeer  
Sr. Manager Strategic Relations

Shaila Patel  
Strategic Relations Specialist

#### Special Thanks

Debbie Finkst  
Jennifer Baum

## ATARI WEB SITES

To get the most out of your new game, visit us at:

<http://www.us.atari.com>

To send e-cards to your friends, download wallpapers, or get access to other free stuff, visit our Freebies section at:

[www.us.atari.com/freebies](http://www.us.atari.com/freebies)

If you would like to chat with other gamers, as well as developers, visit our Community Forum area at:

[www.ataricomunity.com](http://www.ataricomunity.com)

Kids, check with your parent or guardian before visiting any web site.

**Chat Messages:** Atari does not monitor, control, endorse, or accept responsibility for the content of chat messages. You are strongly encouraged not to give out identity or other personal information through chat message transmissions. Kids, check with your parent or guardian if you are concerned about any chat you receive.

Use of Atari web sites is subject to terms and conditions, which you can access at:

[www.us.atari.com/terms\\_of\\_service.asp](http://www.us.atari.com/terms_of_service.asp)

## TECHNICAL SUPPORT (U.S. & CANADA)

### Help Via the Internet

Up-to-the-minute technical information about Atari products is generally available 24 hours a day, 7 days a week via the Internet at:

<http://www.atarisupport.com>

Through this site you'll have access to our **FAQ** (Frequently Asked Questions) documents, our **Hints/Cheat Codes** if they're available, and an **E-Mail** area where you can get help and ask questions if you do not find your answers within the **FAQ**.

**Note:** In the event we must send you a Hint Sheet, FAQ document, patch or update disc via E-mail, we may require verifiable consent from a parent or guardian in order to protect children's privacy and safety online. Consent Forms are available at the web site listed above.

### Help Via Telephone in the United States & Canada

For phone assistance, call **Atari Technical Support** at **(425) 951-7108**. Our **Interactive Voice Response** system is generally available 24/7, providing automated support solutions immediately.

This console-based product has automated support, which includes information such as gameplay tips, information on Control Keys,



possible Cheat Code combination keys, and instructions for finding secret screens and/or additional game levels (if these type of items exist and are made available for this particular product).

Great News! We've improved our Automated Systems so that you can get product-specific Troubleshooting help more quickly. All you need to do is enter the product's **Part #** when prompted to do so. This will take you directly to all of our known issues and solutions for this title. The product's **Part #** is located in several places (on the CD label, Game Pak, package and/or plastic disc case, if applicable) and is usually identified by a number such as **04-12345**. When prompted by the Automated System, enter the **last five digits** of your product's Part #. (For example, Part # 04-12345 would require that you enter the "12345" portion of the number for that product.) **Note:** Some products simply feature a five-digit Part # without an "04-" prefix.

Live support is generally available Monday through Friday, 8:00 AM until 6:00 PM (Pacific Time). **Note:** We may be closed on major holidays.

#### **Product Return Procedures in the United States & Canada**

In the event our technicians at **(425) 951-7108** determine that you need to forward materials directly to us, please include a brief letter explaining what is enclosed and why. Make sure you include the Return Merchandise Authorization Number (RMA#) supplied to you by the technician, and your telephone number in case we need to call you. You will receive the mailing address when the technician gives you the RMA#. Any materials not containing this RMA# will be returned to you unprocessed.

#### **Warranty Policy in the United States & Canada**

If our technicians determine that the product storage medium is found to be defective within ninety (90) days of original purchase, (unless otherwise provided by applicable law), Atari will replace the item free of charge, to the original purchaser, if the item is accompanied by the original dated receipt and packaging.

## **END-USER LICENSE AGREEMENT**

**IMPORTANT — READ CAREFULLY:** Please be sure to carefully read and understand all of the rights and restrictions described in this End-User License Agreement ("EULA").

### **AGREEMENT**

This document is an agreement between you and Atari, Inc. and its affiliated companies ("Company"). The enclosed software game disc(s), cartridge or Game Pak ("Software") and any accompanying printed materials are licensed to you only on the condition that you accept all of the terms contained in this EULA.

By opening this package and installing or otherwise using the Software you agree to be bound by the terms of this EULA. If you do not agree to the terms of this EULA you may not install or use the Software and within 15 days of purchase you must call the Tech Support telephone number listed in the manual accompanying the Software (the "Manual"). Select the Automated Phone System's Main Menu option for Consumer Services and follow the prompts.

You will be given a Return Merchandise Authorization number (RMA #) by the technician. You then have 15 days from the date of this contact to return the Software in its protective covering, the Manual and the original sales invoice to the address supplied to you.

If this is a PC product, when you install the Software you will be asked to review and either accept or not accept the terms of the EULA by clicking the "I Accept" button. By clicking the "I Accept" button you acknowledge that you have read the EULA, understand it and agree to be bound by its terms and conditions.

### **COPYRIGHT**

The Software is protected by copyright laws and international copyright treaties, as well as other intellectual property laws and treaties. All title and copyrights in and to the Software (including but not limited to any images, photographs, animations, video, music, text and "applets" incorporated into the Software) and any printed materials accompanying the Software are owned by the Company or its Licensors.

### **GRANT OF LICENSE**

The Software is licensed and not sold to you and its use is subject to this EULA. The Company grants you a limited, personal, non-exclusive license to use the Software in the manner described in the user documentation. The Company reserves all rights not expressly granted to you in this EULA.

### **PERMITTED USES**

1. If the Software is configured for loading on a hard drive, you may install and use the Software on a single computer.
2. You may make and maintain one copy of the Software for backup and archival purposes, provided that the original and copy of the Software are kept in your possession.
3. You may permanently transfer all your rights under this EULA, provided you retain no copies, you transfer all of the Software (including all component parts, the media and printed materials and any upgrades) and the recipient reads and accepts this EULA.



## RESTRICTIONS

1. You may not delete or obscure any copyright, trademark or other proprietary notice on the Software or accompanying printed materials.
2. You may not decompile, modify, reverse engineer, disassemble or otherwise reproduce the Software.
3. You may not copy, rent, lease, sublicense, distribute, publicly display the Software, create derivative works based on the Software (except to the extent expressly permitted in the Editor and End-User Variation section of this Agreement or other documentation accompanying the Software) or otherwise commercially exploit the Software.
4. You may not electronically transmit the Software from one computer, console or other platform to another or over a network.
5. You may not use any backup or archival copy of the Software for any purpose other than to replace the original copy in the event it's destroyed or becomes defective.

## EDITOR AND END-USER VARIATIONS

If the Software includes a feature that allows you to modify the Software or to construct new variations (an "Editor"), you may use such Editor to create modifications or enhancements to the Software, including the construction of new levels (collectively the "Variations"), subject to the following restrictions. Your Variations: (i) must only work with the full, registered copy of the Software; (ii) must not contain modifications to any executable file; (iii) must not contain any libelous, defamatory or other illegal material, material that is scandalous or invades the rights of privacy or publicity of any third party; (iv) must not contain any trademarks, copyright-protected work or other property of third parties; and (v) may not be commercially exploited by you, including but not limited to making such Variations available for sale or as part of a pay-per-play or timesharing service.

## TERMINATION

This EULA is effective until terminated. You may terminate this EULA at any time by destroying the Software. This EULA will terminate automatically without notice from the Company if you fail to comply with any provisions of this EULA. All provisions of this EULA as to warranties, limitation of liability, remedies and damages will survive termination.

## LIMITED WARRANTY AND DISCLAIMER OF WARRANTIES

You are aware and agree that use of the Software and the media on which is recorded is at your sole risk. The Software and media are supplied "AS IS." Unless otherwise provided by applicable law, the Company warrants to the original purchaser of this product that the Software storage medium will be free from defects in materials and workmanship under normal use for ninety (90) days from the date of purchase. The warranty is void if the defect has arisen through accident, abuse, neglect or misapplication. If the Software fails to conform to this warranty, you may at your sole and exclusive remedy, obtain a replacement free of charge if you return the defective Software. Follow the Product Return Procedures described in the Manual. The Company does not warrant that the Software or its operations or functions will meet your requirements, or that the use of the Software will be without interruption or error.

TO THE FULLEST EXTENT PERMISSIBLE UNDER APPLICABLE LAW, EXCEPT FOR THE EXPRESS WARRANTY SET FORTH ABOVE, THE COMPANY DISCLAIMS ALL WARRANTIES, EXPRESS OR IMPLIED, INCLUDING AND WITHOUT LIMITATION, THE IMPLIED WARRANTIES OF MERCHANTABILITY AND FITNESS FOR A PARTICULAR PURPOSE AND NON-INFRINGEMENT. EXCEPT FOR THE EXPRESS WARRANTY SET FORTH ABOVE, THE COMPANY DOES NOT WARRANT, GUARANTEE OR MAKE ANY REPRESENTATION REGARDING THE USE OR THE RESULTS OF THE USE OF THE SOFTWARE IN TERMS OF ITS CORRECTNESS, ACCURACY, RELIABILITY, CURRENTNESS OR OTHERWISE. SOME JURISDICTIONS DO NOT ALLOW THE EXCLUSION OF OR LIMITATIONS ON IMPLIED WARRANTIES, SO THE ABOVE EXCLUSIONS AND LIMITATIONS MAY NOT APPLY TO YOU.

## LIMITATION OF LIABILITY

IN NO EVENT WILL THE COMPANY OR ITS EMPLOYEES OR LICENSORS BE LIABLE FOR ANY INCIDENTAL, INDIRECT, SPECIAL, CONSEQUENTIAL OR PUNITIVE DAMAGES, OR ANY DAMAGES WHATSOEVER (INCLUDING, WITHOUT LIMITATION, DAMAGES FOR INJURY TO PERSON OR PROPERTY, FOR LOSS OF PROFITS, BUSINESS INTERRUPTION, LOSS OF BUSINESS INFORMATION, LOSS OF PRIVACY, FAILURE TO MEET ANY DUTY AND NEGLIGENCE) ARISING OUT OF OR IN ANY WAY RELATED TO THE USE OR INABILITY TO USE THE SOFTWARE, EVEN IF THE COMPANY OR AN AUTHORIZED REPRESENTATIVE OF THE COMPANY HAS BEEN ADVISED OF THE POSSIBILITY OF SUCH DAMAGES. SOME JURISDICTIONS DO NOT ALLOW THE EXCLUSION OF LIABILITY FOR INCIDENTAL OR CONSEQUENTIAL DAMAGES, SO THE ABOVE EXCLUSION MAY NOT APPLY TO YOU.

IN NO EVENT WILL THE LIABILITY OF THE COMPANY FOR DAMAGES WITH RESPECT TO THE SOFTWARE EXCEED THE AMOUNTS ACTUALLY PAID BY YOU FOR THE SOFTWARE.

## CHOICE OF LAW AND VENUE

This EULA is governed by the laws of the United States of America and the State of New York, exclusive of its conflicts of law provisions. The exclusive venue for litigation regarding or arising from this EULA is New York County, New York and you agree to submit to the jurisdiction of the courts of New York County, New York for any such litigation.

## MISCELLANEOUS

If any provision or portion of this EULA is found to be unlawful, void, or for any reason unenforceable, it will be severed from and in no way affect the validity or enforceability of the remaining provisions of the EULA.

This EULA constitutes the entire agreement between you and the Company regarding the Software and its use.

© 2003 Atari Europe. All Rights Reserved. Developed by Etanges Libellules. All trademarks are the property of their respective owners.

**Atari** and **Atari** are official trademarks of Les Editions Albert René  
©2004 LES ÉDITIONS ALBERT RENÉ/BOSCIGNY-UDERZO

RenderWare is a registered trademark of Canon Inc. Portions of this software are copyright 1998-2002 Criterion Software Ltd. and its licensors.

**DOLBY** Pro Logic II, Dolby, Pro Logic, and the double-D symbol are trademarks of Dolby Laboratories. Manufactured under license from Dolby Laboratories.